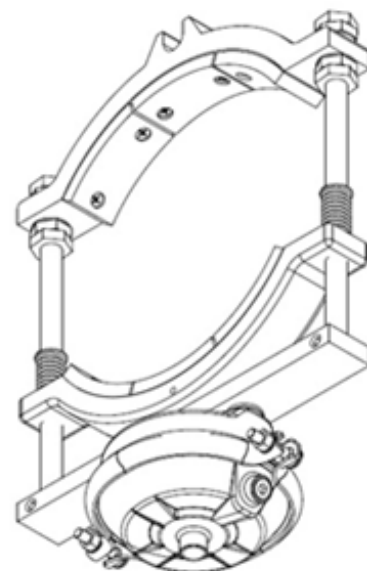
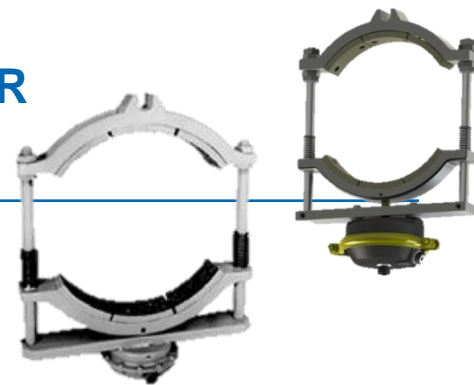
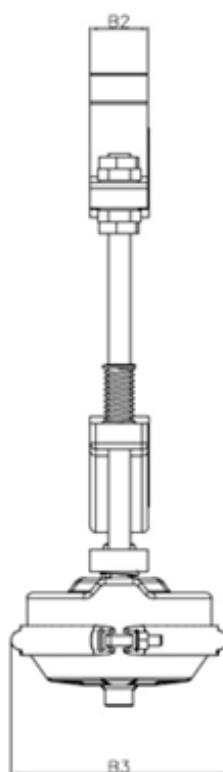
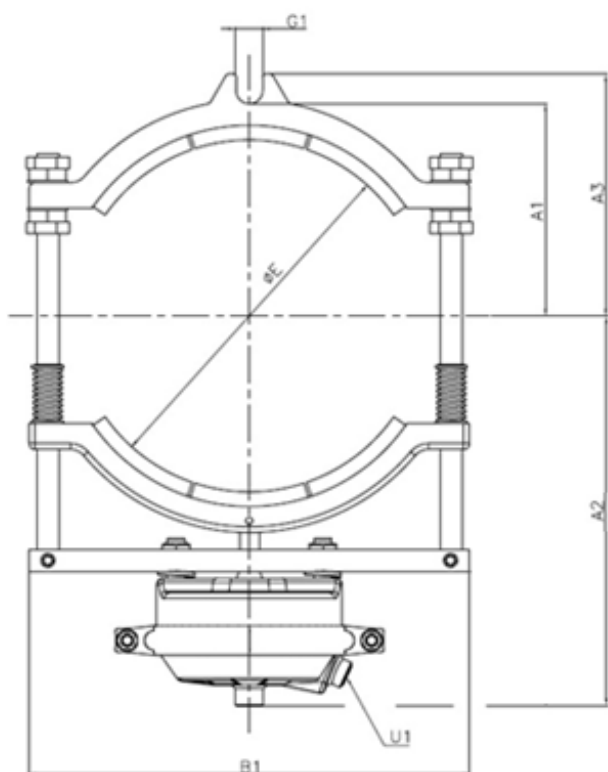


FREIO PNEUMÁTICO RADIAL À TAMBOR

SÉRIE PFTI / NK



Tamanho	Torque Máx. (Nm)	Rotação Máx. (RPM)	Pressão (Bar)	A1	A2	A3	B1	B2	B3	E	Ø Tambor	G1	U1
04	150	1.800	5,5	66,5	200,5	85,9	132,8	31,8	200,0	104,8	101,6	16,8	1/4" NPT
05	195	1.800	5,5	77,0	217,5	87,0	159,0	37,0	200,0	130,5	127,0	17,5	1/4" NPT
06	230	1.800	5,5	92,5	235,0	104,0	190,5	43,0	200,0	155,6	152,4	18,2	1/4" NPT
08	300	1.800	5,5	124,0	269,5	152,0	285,8	50,0	200,0	206,4	203,2	19,8	1/4" NPT
10	390	1.800	5,5	154,0	304,0	173,5	317,5	50,0	200,0	257,2	254,0	20,2	1/4" NPT
12	470	1.800	5,5	184,5	338,5	208,0	381,0	50,0	200,0	308,0	304,8	23,5	1/4" NPT
14	550	1.800	5,5	215,5	373,5	243,0	444,5	55,0	200,0	358,8	355,6	27,2	1/4" NPT
16	620	1.500	5,5	246,0	408,0	277,5	508,0	55,0	200,0	411,2	406,4	31,2	1/4" NPT
18	700	1.200	5,5	277,0	443,0	312,0	571,5	60,0	200,0	462,0	457,2	35,2	1/4" NPT
20	780	1.000	5,5	308,0	477,5	347,0	635,0	60,0	200,0	512,8	508,0	39,2	1/4" NPT

SERIE TIPO TAMANHO

PFT/NK - 22

SELEÇÃO DE CONJUNTO

SERIE TIPO TAMANHO COMPLEMENTO

PFT/NK - 22 - TF

SELEÇÃO DE TAMBOR

RESERVAMOS-NOS O DIREITO DE ALTERAR AS MEDIDAS SEM AVISO PRÉVIO

JUN 18



Parceiro Comercial
Speedy Usinagem
R. Radames Nardine 146
Mauá, SP

t: +55 (11) 96176-0956
e: info@itekbr.com
www.itekbr.com

